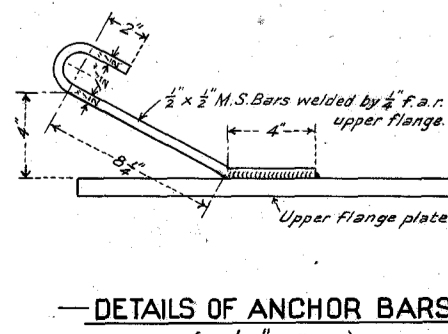
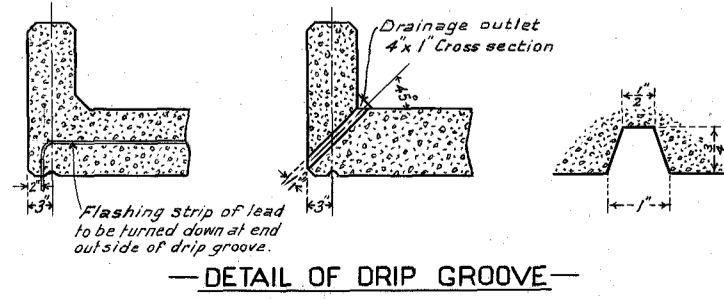
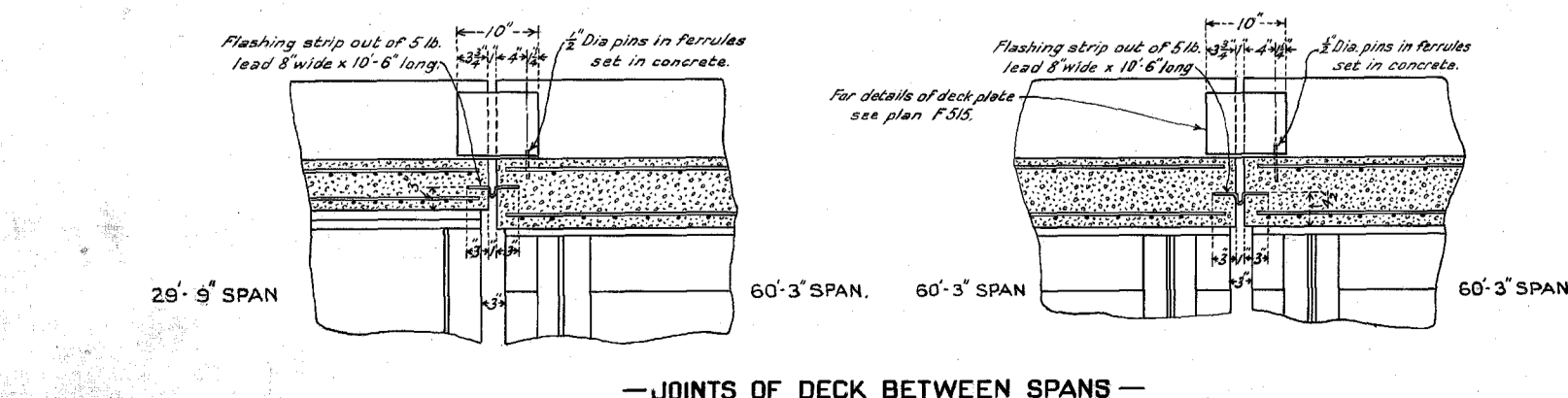
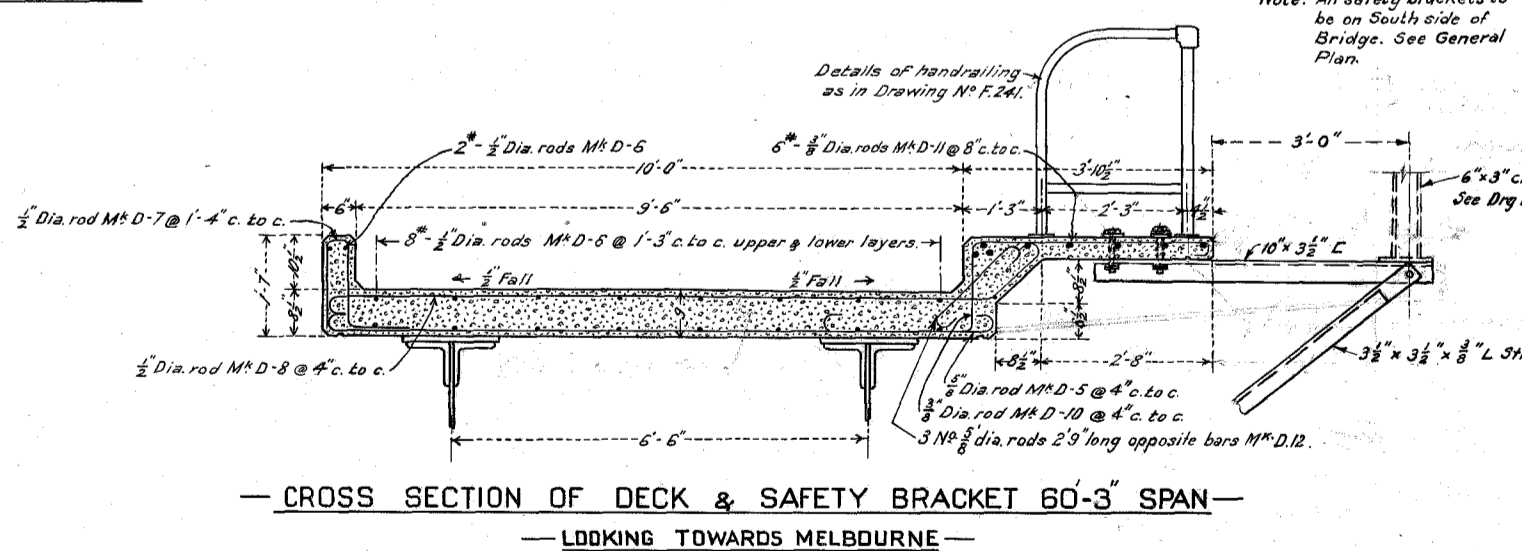
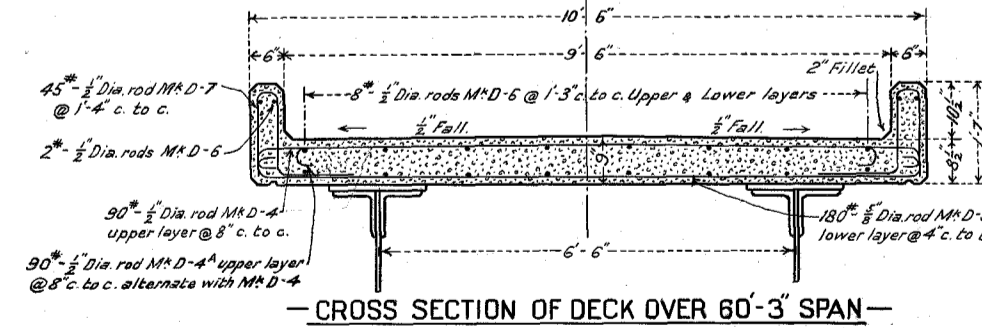
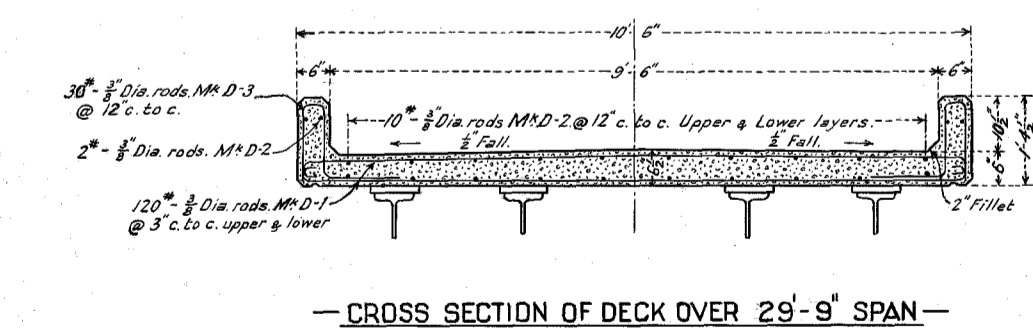
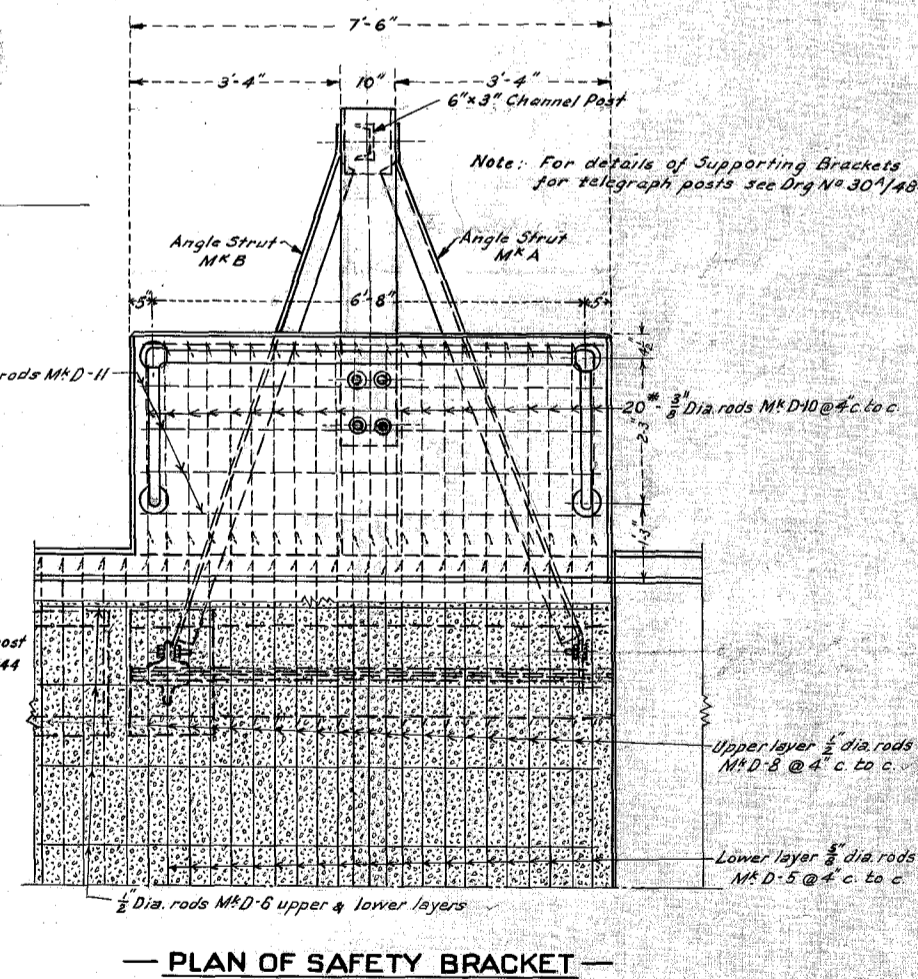
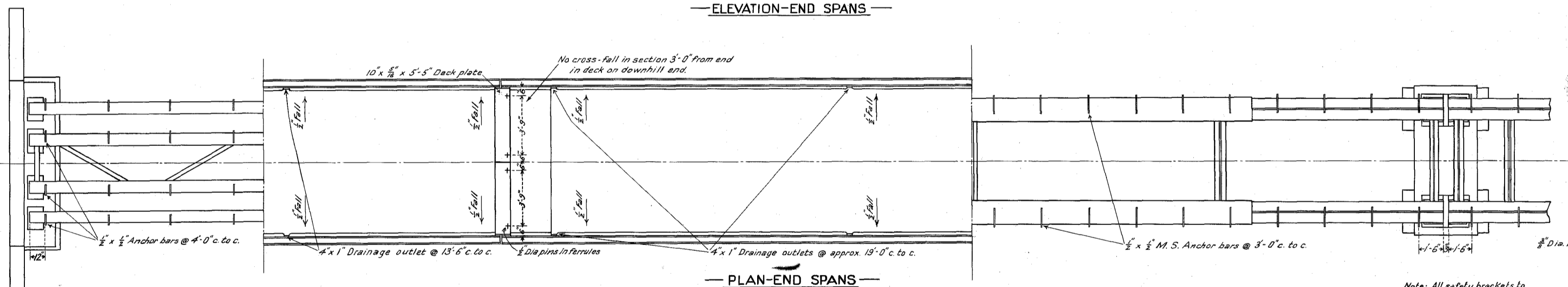
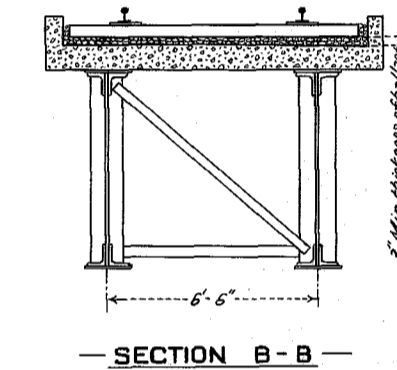
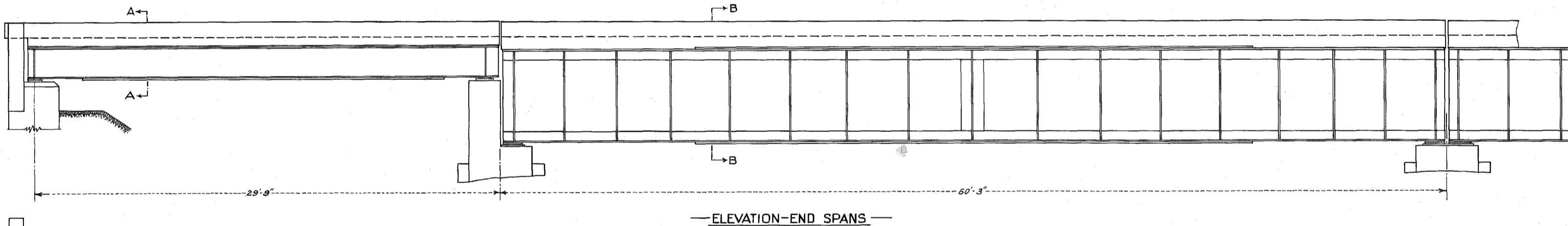
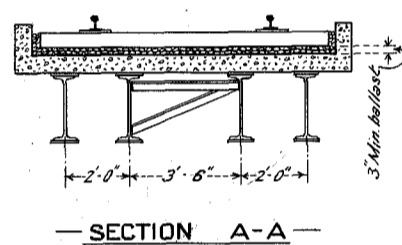
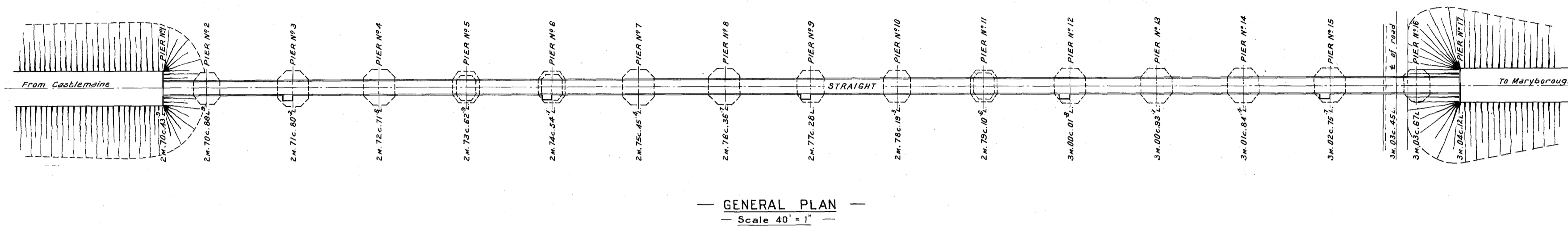
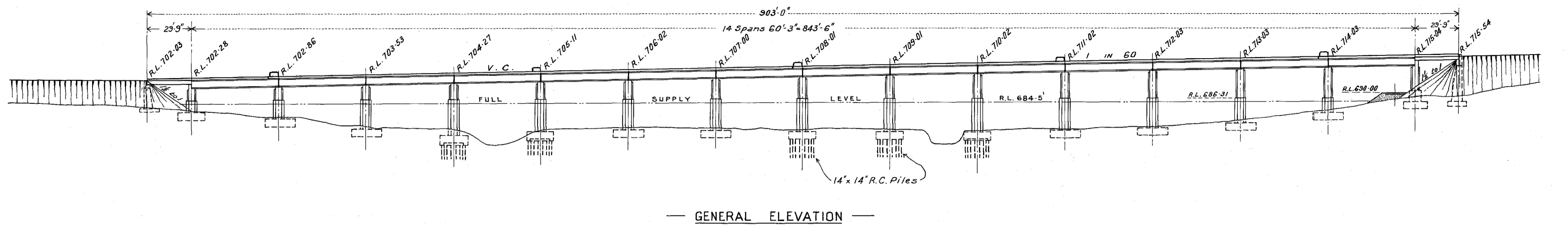


BOARD OF LAND & WORKS
RAILWAY CONSTRUCTION BRANCH



— NOTE — Bridge designed in accordance with Railway Construction Branch Instructions For Design 1947. - Cooper's L55 loading. All concrete to be Class A, minimum compressive strength at 28 days, 3000 lbs. per sq. inch. A clear cover of 1 1/2 inch (minimum) of concrete over reinforcement to be used in deck slabs. 1 inch (minimum) clear cover over reinforcement to be used at kerbs and safety platforms.

CASTLEMAINE TO MARYBOROUGH
— DEVIATION AT JOYCE'S CREEK —
— BRIDGE OVER JOYCE'S CREEK —
— GENERAL PLAN & ELEVATION —
— AND DETAILS OF SUPERSTRUCTURE —
— Scales - 1\"/>

REVISION	LETTER	DATE	REMARKS	DRAWN BY	H. L. S.	SUPERINTENDING ENGR	CHIEF ENGINEER	DRAWING NO
	A	17-7-51	Deck reinf. upper layer amended 60' spans & minimum concrete cover increased					34/420
	B	20-6-52	Addition of Telegraph Post Attachments					
	C	21-6-53	Alts to Deck reinf. in 60'-3' spans.					
	D	6-12-56	Alts to Brackets for Telegraph posts.					